

# Glutton®

## Zen®

INNOVATION & PERFORMANCE



Your 100% electric sweeper

---

Agile

Powerful

Manoeuvrable

Simple

Efficient

Reliable





# The Glutton® Zen®

**100% Electric** 

street sweeper, looking after your urban spaces ecologically



## Filtration

The best **filtration quality** available on the market thanks to the Glutton® Zen® 32 m<sup>2</sup> filter that stops 99.9% of dust > 0.5 microns.



## Ergonomics

The Glutton® Zen® cab is particularly spacious and ergonomic. It's the only machine in its category to offer **maximum comfort** to users up to **2 metres tall!** A real revolution in street sweepers.



## Peace and quiet

The Glutton® Zen® **creates peace and quiet**, putting a smile on the face of residents, passers-by and operators.



## Visibility

The Glutton® Zen® cab offers **panoramic visibility**. The unique and original Glutton® Zen® windscreen is panoramic and inclined, creating shade in the cab.

4	Welcome to Glutton®
6	Our references
8	The new generation of sweepers
10	Choose electric
12	Glutton® Zen® collects all waste, wherever it goes
14	Panoramic cab
17	Anti-dust filtration system
18	Standard equipment
21	Optional equipment
29	Your local After-Sales service
30	Your Peace of Mind contract
32	Technical characteristics
35	Glutton® in the press

# Welcome to **Glutton**<sup>®</sup>

## Glutton<sup>®</sup>'s vision

Glutton<sup>®</sup> provides the **convenience** of cleanliness for everyone, improving **safety** in Cities and Industrial Sites around the world.

## Glutton<sup>®</sup> also has a mission

To **invent, develop** and market new products making the environment cleaner AND **safer**, while enhancing the status of human labour.

## Glutton<sup>®</sup>'s core values:

- > Quality
- > People
- > Innovation
- > Passion
- > Dynamism
- > Sustainable development



## World leader in electric street cleaning equipment

Our 30 years of experience in the service of urban cleanliness has allowed us to design and produce innovative machines perfectly adapted to the everyday needs of cities, communes and municipalities the world over.

Our urban Glutton<sup>®</sup> Collect<sup>®</sup> waste vacuum cleaner is used daily to clean more than **6,000 towns and cities in 70 countries** across 5 continents. Our new Glutton<sup>®</sup> Zen<sup>®</sup> 100% electric sweeper revolutionises the way we clean urban spaces.

Our **new 7,000 m<sup>2</sup>** ultra-modern and ecoresponsible **production** facility is strategically located in Namur, Belgium. More than 900 m<sup>2</sup> of this site is given over to facilities, laboratories and test tracks dedicated to R&D. We aim for operational excellence, and over the years to come, our number one priority remains customer satisfaction.

*30 years  
of expertise  
and experience  
keeping your  
city clean.*





## An efficient, international production facility

Our factory reflects the image of our products: agreeable, functional, rigorous and efficient.

Innovation is in our DNA.

For R&D, our new production facility has:

- > **600 m<sup>2</sup>** of 100% R&D **workshop** space
- > **A 150 m<sup>2</sup>** **office** accommodating 20 engineers
- > A clean room for **3D printing and electronics**
- > Interior and exterior **test tracks**
- > An **accelerated test** laboratory (R&D Test Box)

# Glutton® References

**Because towns  
and cities the world  
over deserve  
to be clean  
and peaceful...**

You'll come across it regularly in towns and cities, airports and stations across the world. You'll have seen it in Nice, on the Promenade des Anglais, by the Sydney Opera House, at the Chelsea football stadium, on the Champs-Élysées, in the sunny south, in an old market square, on your weekend in Saint Petersburg and even on your most recent holidays to Chile...

*It's Glutton® of course!*

...the sun never sets on Glutton®



**6,000**  
towns and cities



**70**  
countries



**5**  
continents







**Glutton®**  
all around  
the world...



# Glutton<sup>®</sup> Zen<sup>®</sup>, the new generation of compact and intelligent electric sweepers

## Because first impressions count...

Dirty streets leave a bad impression on visitors, especially if they're visiting your city for the first time. Luckily, the Glutton<sup>®</sup> Zen<sup>®</sup> sweeper gets rid of dirt, broken glass, leaves and all other types of waste. What's more, cleanliness has a real impact on the peace of mind of your residents.

Cleaning the streets tells visitors, tourists and residents that you care about making your city a pleasant place to live and work, and that you're committed to the health and safety of your residents.







The Glutton® Zen® was awarded the prestigious "Belfius Smart Award"



## ...and air quality must be improved in all our urban centres...

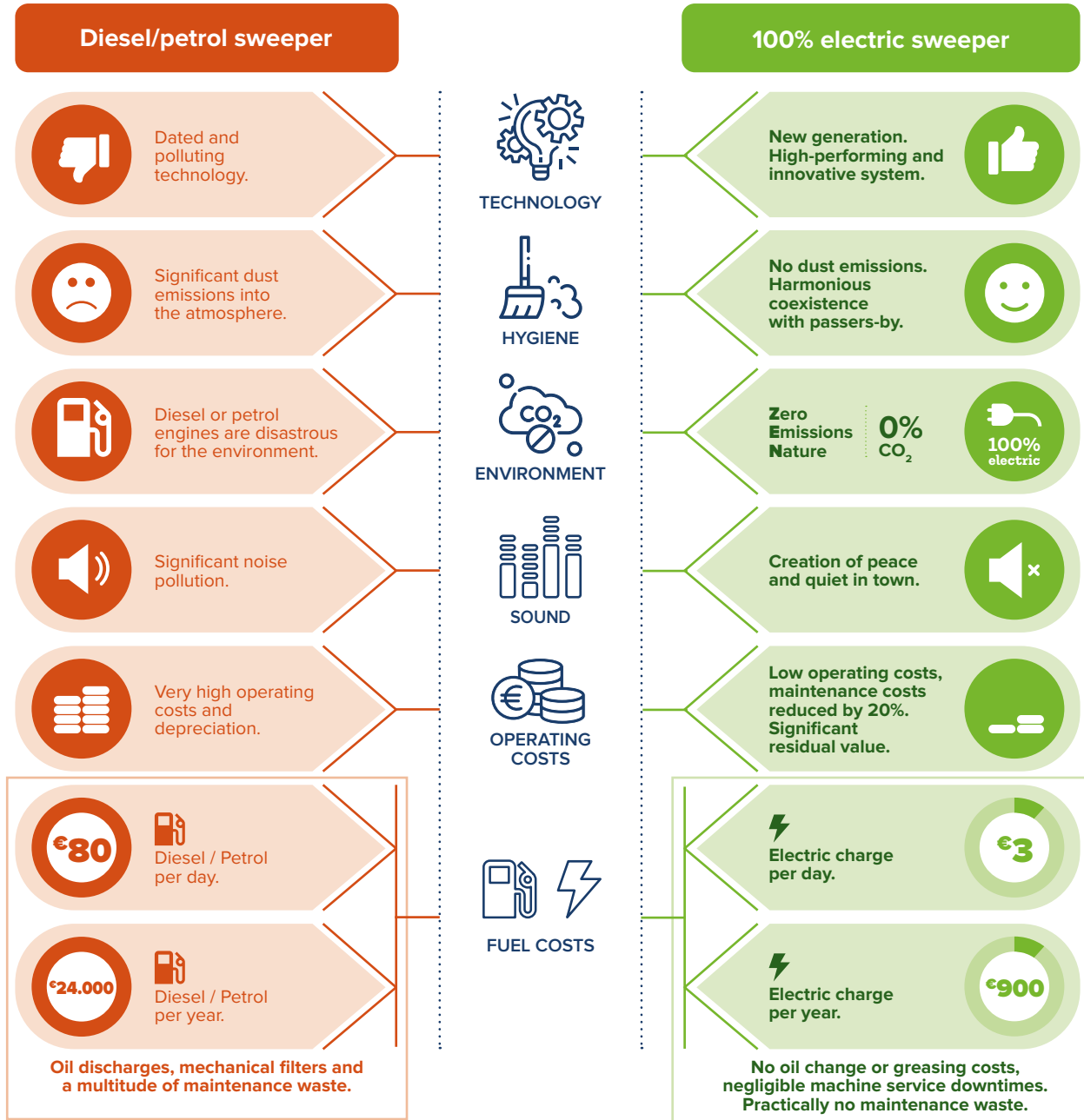
Town and city centres are particularly vulnerable to pollutant concentrations. Air quality is a key challenge in our modern cities. Using electric energy does away with the many drawbacks of diesel and petrol machines, which includes the production of CO<sub>2</sub> and the very high cost of fuel.





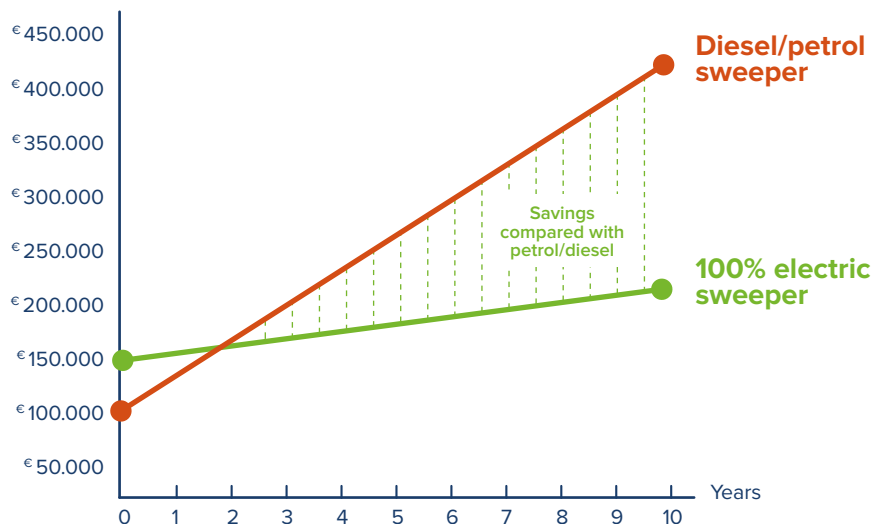
Glutton<sup>®</sup> Zen<sup>®</sup>,  
the electric, ergonomic  
and economic solution





**Depreciation of petrol/diesel / electric sweeper**

Investment difference is recovered over 2 years!



# Glutton® Zen®

collects **all waste...**  
wherever it goes

The Glutton® Zen® 100% electric sweeper crosses **all ground types** with ease, from the most resistant to the most fragile: asphalt, rough concrete, paved areas, clinkers, etc.

## It collects all your urban waste:

- > Cigarette butts
- > Greasy paper
- > Cans
- > Dead leaves
- > Bottles
- > Etc.
- > Food packaging







# Your city's future is **Zen and electric**



**Compact and easy to manoeuvre, it is particularly well suited for:**



- > City centers
- > Communal streets
- > Pedestrian streets
- > Historic centres
- > Market areas



- > Car parks
- > Cycle paths
- > Seaside promenades
- > Schools and universities
- > Shopping malls
- > Confined or difficult to access areas
- > Tourist areas with heavy footfall



# Panoramic cab



Particularly spacious and ergonomic, it's the only sweeper in its category to comfortably accommodate **users up to 2 metres tall**.

The unique and original Glutton® Zen® windscreen is panoramic and inclined to create shade in the cab (NO greenhouse effect).

***More ergonomic.  
More space.  
More visibility.  
More comfort.  
More equipment.  
More peace and quiet.***



## Your benefits:

- > Panoramic windscreen
- > Ground visibility
- > Completely soundproofed
- > Ergonomic armrest for controls.



## Premium equipment:

- > Climate-control / heating
- > 2 side mirrors
- > 1 mirror for the brushes
- > 2 DIN double screens:
  - complete control screen with hour counter and useful information
  - "double DIN" radio







## And for your operators' comfort:

- > Storage compartment
- > Net pouches for personal items
- > Coolbox
- > Coat hanger
- > 12 volt socket
- > Cup, bottle or can holder
- > USB socket for mobile recharging
- > Keys
- > Visor
- > Opening side half-window
- > Ceiling light
- > 2 loudspeakers
- > 6 adjustable air vents







## Anti-dust filtration system

The Glutton® Zen® sweeper is equipped with a 32 m2 ultra-efficient dry anti-dust filter, meaning less on-board water while offering **the best filtration on the market.**

**The filter stops 99.9% of dust > 0.5 microns.**

**The air discharged by the Glutton® Zen® is cleaner than the air we breathe.**

The Glutton® Zen® is certified PM10\*\*\*\* and PM2.5\*\*\*\*.

*The Glutton® Zen® anti-dust filtration quality is totally unique.*

**No dust emissions!**

### Your benefits:

- > No pollutant emissions.
- > Protection of operators, residents and the environment.
- > Can be used in town and city centres without bothering passers-by.



# Discover the many items of equipment available as **standard** on the Glutton® Zen®

## Rear camera with digital touch screen

The rear camera simplifies your reversing manoeuvres and when emptying the hopper. You can also use it to check there are no trails left behind your Glutton® Zen®.

The images are displayed on the cab's main screen. 7" TFT LCD colour screen - 800 x 480 resolution.

*Excellent readability. Backlit control keys.*



## Electrically-adjustable, pneumatic "Comfort" seat

To work in complete comfort, the ergonomic "Comfort" seat can be adjusted as follows:

- > Depth adjustment.
- > Height adjustment.
- > Seat back inclination adjustment.
- > Right armrest inclination adjustment.
- > The head rest is also adjustable.



## Coolbox

For snacks, cold drinks and the comfort of your operators.



## Double DIN Bluetooth radio

High-quality radio with illuminated keys. Hands free kit for your phone.



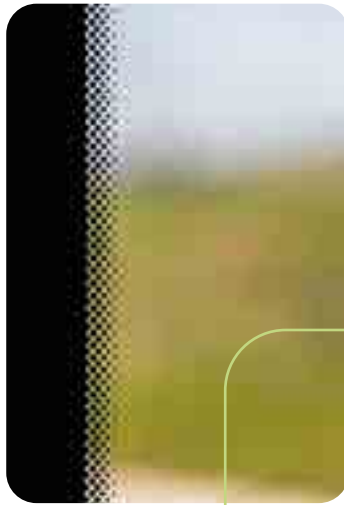
*The silent cab makes it easy to listen to the radio.*





## 12v and USB sockets

Additional comfort available as standard on all our sweepers. Extremely practical to charge your smartphone or other electrical devices.



## Heated and de-icing windscreen

This equipment, offered as standard on all Glutton® Zen®, is perfect for rainy, frosty, icy and misty weather.

### Your benefits:

- > De-mists and de-ices rapidly.
- > Optimal visibility in all circumstances.
- > Enhanced driving safety.

## Flashing safety lights

The 4 LED lights are positioned each side of the machine. You can light them permanently for better visibility on public roads and therefore enhanced safety.

## Other safety features:

2 kg extinguisher, automatic reversing signal, fluorescent vest and work gloves, electromagnetic brake in case of power failure, **turbine motor cut-out when battery is 80% discharged.**



Equipment available as standard



## 100% Electric

### Sweeping and suction

You have a vast **sweeping width**, from 1,300 to 2,350 mm.

You can carry out all sweeping operations and all brush pressure and rotation speed adjustments from your cab.

The suction intake lifts up, by a control in the cab, for bulkier waste.

The brushes have a diameter of 650 mm and are equipped with adjustable nozzles. They can be quickly and simply dismantled.

The suction intake is high strength stainless steel.

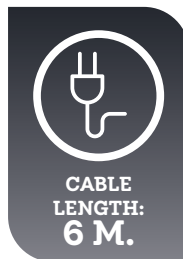


Suction mouth width 750 mm

Sweeping width up to 2,350 mm

### IP20 standard charger (230V/16A)

Robust industrial connector compatible with a wall-mounted socket. Intelligent and efficient charger with a screen displaying the last charge cycles. Once back at the shop, recharging your sweeper is quick and simple. The portable trolley is an option.



*Option to connect your charger to a conventional 220 V socket.*

For "household" plugs



**Ideally, use a blue camping plug** as per the new European standard



You will need an adaptor





# A wide range of useful **options** to meet your needs



## 100% automatic fire extinguisher in the hopper for maximum safety

If there is an abnormal temperature increase in the waste hopper, the sensor **automatically** triggers the shutdown of the turbine and activates an extinguisher to stop fire breaking out.

The operator is warned instantaneously via the main control screen inside the cab.



## Climate control

Air conditioning is an essential element for the comfort and safety of your operators. The air is filtered and cleaned to ensure operators enjoy a pleasant temperature in the cab and breathe pure air.

*You have 6 adjustable vents and 3 ventilation speeds to choose from!*

## Opening roof

On request, your cab can be fitted with an opening roof with an attractive design. Option not compatible with climate control.





## 100% ergonomic grand comfort seat

The seat is **electrically adjustable** with pneumatic suspension and an adjustable headrest.

### The operator has a number of adjustments available:

- > Lumbar adjustment
- > Depth adjustment
- > Horizontal seat adjustment
- > Height adjustment
- > Seat back adjustment
- > Seat inclination
- > Seat hardness adjustment



## On-board panoramic camera: one screen for 360° vision!

Monitor the surroundings of the vehicle from the cab to operate and manoeuvre the machine in complete safety thanks to our 360° super camera. Everything in the field of vision of the cameras, whether people or obstacles, is displayed in real time on a dedicated colour screen.

*This option is very popular with operators.*



### Your benefits:

- > 4 cameras for a bird's eye view.
- > Perfect visibility of your Glutton® Zen® surroundings.
- > Easier and safer precision manoeuvres.
- > No blind spots.
- > Ultra-high quality 7" colour screen (1440 x 234 px resolution)



## Camera on the suction intake

The camera provides a complete view of the suction intake on the main colour screen of your machine's cab.



## Electric mirrors with electric de-icing

Tilt and de-icing of the mirrors are 100% electric and adjustable from the cab.



ADJUSTABLE MIRRORS



## High-pressure cleaner on 10 metre automatic reel

Simple to use and very easy to store. You'll love the functionalities of this high-pressure cleaner. It rounds off the sweeping and vacuuming of your streets to perfection.

You can use the High-pressure cleaner to clean public bins, street gutters, etc. It can also be used to clean your Glutton® Zen® waste hopper at the end of the day.



HOSE LENGTH: 10 M.

*Use it to quickly and efficiently clean difficult to access areas.*



## Manual suction hose with mount

The hose with its 125 mm nozzle lets you suction clean the most difficult to reach areas (behind public benches for example).

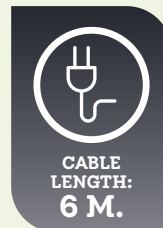
*It is simple to set up and dismantle if used seasonally (e.g., suction cleaning of autumn leaf fall).*



## Three-phase rapid charger

Need a faster charger?

Contact us to discuss your requirements. We can offer you a 32A three-phase **rapid charger** to charge your Glutton® Zen® in no time at all.



*Delivered without portable trolley.*

## Portable charger stand

Ideally, your charger should be mounted to your workshop wall, but if this isn't possible, we offer you a simple and effective solution: our portable charger stand. Easy to move, with a design allowing for ergonomic cable winding.



*Delivered without charger.*



## Spare tyre

Industrial quality robust wheel.



## Safety lettering

Increases **visibility** and contributes to the **safety** of vehicles and persons. We adapt to the standards in force in your country and/or the regulations of your city (red and white strips, reflective strips, pictograms, disks, A31 or D1 panels, etc.).



Your machine in the colours of your city.

## Customised adhesive lettering

We place your logo or wording elegantly on your Glutton® Zen® according to your instructions and your graphic charter. Your sweeper becomes a true communication tool.



## Bodywork colour

**Option 1:** the back of the Glutton® Zen® is painted (the cab remains white).

**Option 2:** the back of the machine AND the cab are painted.

# Glutton® Zen® Filter Cleaner

The Glutton® Zen® Filter Cleaner (registered design) is a rapid and practical solution for cleaning the filters of Glutton® Zen® sweepers. This is a 100% automatic system with no atmospheric dust emissions.

The Glutton® Zen® Filter Cleaner is fitted with wheels and is therefore very easy to move.

*100% automatic,  
your filter will be  
ready to use again  
in 10 minutes.*



## Characteristics:

- > All dust collected in a bag.
- > Clean and safe.
- > Connection to a standard electrical socket.
- > Complete clean in 10 minutes.
- > Compact and manoeuvrable.





### Your benefits:

- > Time savings.
- > Efficiency gains.
- > Quick and simple to use.
- > Optimal suction power.
- > Environment protected:  
no atmospheric dust emissions.

***Autonomous  
and hygienic  
filter cleaning  
system.***



## Do you want to geolocate your Glutton® Zen®? You're all set!

Contact us to discuss it!

Your sweeper is equipped with a protected power supply intended for a geolocation system.

This power supply is compatible with the vast majority of GPS available on the market (24 VDC) and guarantees the optimal installation of your current geolocation system.

You can exploit information such as the activation of the "work mode" or emptying the hopper on your geolocation platform.

So you can track your sweeper like the rest of your vehicle fleet.



## Temporary work panel

This sign, once raised, draws the attention of other road users to the presence of a **special vehicle at work**.

Solid and lightweight signage panel equipped with **3 flashing LEDs** for enhanced visibility and safety.

If you opt for the **electric panel**, everything is **automatic**. At the press of a button, the panel immediately unfurls into the open position. It is both stable and flexible to withstand bad weather.

*This panel also comes as a manual panel, ask us.*



Automatic centralised greasing



Manual centralised greasing



## Centralised greasing

Too much grease is as harmful as too little grease. To limit maintenance tasks and make life easier, opt for **automatic centralised greasing**, which enables the regular delivery of precisely the amount of grease required.

*100% automatic greasing makes life easier.*

We also offer **manual centralised greasing** with simple access to a single location for greasing.



# Your local After-Sales service

*Fast, local and efficient: get your Glutton® Zen® up and running again in a matter of hours.*

The quality of its After-Sales service in particular has positioned Glutton® as world leader with its celebrated “Glutton® Collect®” street vacuum cleaners.

We are committed to respecting our motto “to make satisfied customers”.

## To keep your sweeper in the best of health, use original parts

Every machine comes with a **complete exploded** view showing all the parts in your *Glutton®* as well as a **price list** for spare parts.

Each sweeper is delivered with clear and comprehensive documentation containing all the useful details and practical recommendations for using and looking your Glutton®.

The following detailed and instructive manuals are supplied with your machine:



> All our spare parts are kept **in stock for 10 years**.



## Our warranty

Glutton® provides a full warranty on labour, travel and spare parts.

*Spare parts?  
Need technical support?  
Repairs?*

*Contact us !*

[service@glutton.com](mailto:service@glutton.com)

## Our specialists for your repairs

Our highly qualified Glutton® travelling technician teams will come to you in vans equipped with the necessary tools and spare parts.

**En route to our customers!**



## Find out about our maintenance plans too

**500** hours

Maintenance plan when your Glutton® reaches 500 hours of operation.

**1,000** hours

Maintenance plan when your Glutton® Zen® reaches 1,000 hours of operation.

# Your Peace of Mind contract



**Enjoy and unleash  
the full potential  
of your sweeper:  
leave everything  
else to us!**

Our technician visits 1, 2 or 3 times a year (depending on the contract type) to keep your Glutton® in peak condition.

*Cleanliness and  
peace of mind combined:  
The Glutton® Zen®  
Peace of Mind  
contract.*

## Your benefits:

- > Your peace of mind
- > A full service on every visit
- > Your machine in perfect health at all times



## We follow strict procedures when we look after your Glutton® Zen®:

- > Replacement of wear parts
- > Verification or replacement of technical fluids
- > Cleaning or replacement of filters
- > Inspection and cleaning of electric motors
- > Inspection of condition of lithium battery pack
- > Inspection of braking system
- > Inspection and cleaning of turbine
- > Inspection of electric circuit
- > Inspection of electronic cards
- > Greasing





*The Peace of Mind contract includes, travel, labour and common wear parts excluding batteries, tyres and brushes.*



# Glutton<sup>®</sup> Zen<sup>®</sup> is a **unique** sweeper **concept** designed to clean towns and cities and industrial sites

## Dimensions and weight

- > **Length** —————> 3,200 mm
- > **Width** —————> 1,200 mm
- > **Height** —————> 2,000 mm
- > **Maximum authorised mass** —> The weight of the Glutton<sup>®</sup> Zen<sup>®</sup> has been studied to reduce the risks of damage to streets, paved areas, etc. and to reduce energy consumption.
- > **Unladen weight in operation** —————> 2,300 kg
- > **Payload** —————> 700 kg

## Batteries

- > **Technology** —————> Lithium
- > **Total voltage** —————> 80 V
- > **Autonomy** —————> More than 10 hours without battery recharge (in full work mode)

## Filtration

- > **Suction filter surface area** —————> 32 m<sup>2</sup>  
Unique very high performance filtration system
- > **Machine compliant with tests on dust particulate emissions** —————> PM 2.5<sup>\*\*\*\*</sup> / PM 10<sup>\*\*\*\*</sup>
- > **Our unique filtration system stops 99.9% of dust > 0.5 microns**

## Transmission, tyres and steering

- > **Traction motor** —————> 100% electric
- > **Suction motor** —————> with 100% electric drive
- > **Brush motor** —————> 100% electric
- > **Maximum travelling speed** —————> 25 km/hr
- > **Tyre diameter** —————> 635 mm
- > **Tyre width** —————> 130 mm
- > **Tyre type** —————> Industrial
- > **Tyre dimensions** —————> 4.5J x 13 x 3.0
- > **Wheelbase** —————> 1,650 mm
- > **Suspension** —————> On 4 wheels
- > **Steering** —————> 2 front guide wheels
- > **Turning radius between curbs** —————> 2.34 m
- > **Turning radius between walls** —————> 2.78 m



**No rear overhang.**  
The axle is positioned so that the wheel stops level with the bodywork.







The generous ground clearance and the large wheel diameter allows edges up to 15 cm to be crossed easily.

**Tyres**  
Type: industrial  
Dimensions: 4.5J x 13 x 3.0

**Easy to access filter**

**High-pressure cleaner**  
Winder length: 10 m  
Motor: Electric



Sweeping width: 1,300 to 2,350 mm



Width: 1,200 mm

Request a free, no-obligation demo in your city

info@glutton.com  
www.glutton.com



Emptying is simple into a standard container, a trailer or a small waste collection vehicle. The pour height is 1,500 mm.

### Suction, sweeping and emptying

- > **Sweeping width** —————> 1,300 to 2,350 mm
- > **Brush diameter** —————> 650 mm
- > **Waste hopper** —————> very high strength stainless steel
- > **Waste hopper capacity** —————> 1 m<sup>3</sup>
- > **Emptying height** —————> 1,500 mm

### Suction system

The suction system is equipped with a removable stainless steel, “anti-jam” grid, which prevents blockages by plastic bags, dead leaves, etc. The grid really helps with the maintenance of your Glutton® Zen®.



### Water tank and wetting system

- > **Water tank capacity**  
175 L
- > **Filling systems**  
Fire nozzle and standard hose
- > **Nozzles**  
2 adjustable nozzles on the brushes



### High-pressure cleaner

- > **Winder length** —————> 10 m
- > **Pressure** —————> 80 bars
- > **Motor** —————> Electric

Sound level in normal operation



**ONLY 57 dB**

### Miscellaneous

- > **Seat type** —————> Electrically adjustable pneumatic seat
- > **Base colour** —————> RAL 9002



**Glutton®**  
in the press...





Zoning Mécallys • Rue du Progrès, 22  
5300 Andenne • Belgium

Registered office  
T. : +32 85 31 04 30  
F. : +32 85 31 04 40

[info@glutton.com](mailto:info@glutton.com)



[www. Glutton .com](http://www.Glutton.com)