



KINSHOFER
crane and excavator attachments

DEMOLITION AND SORTING GRABS D-SERIES



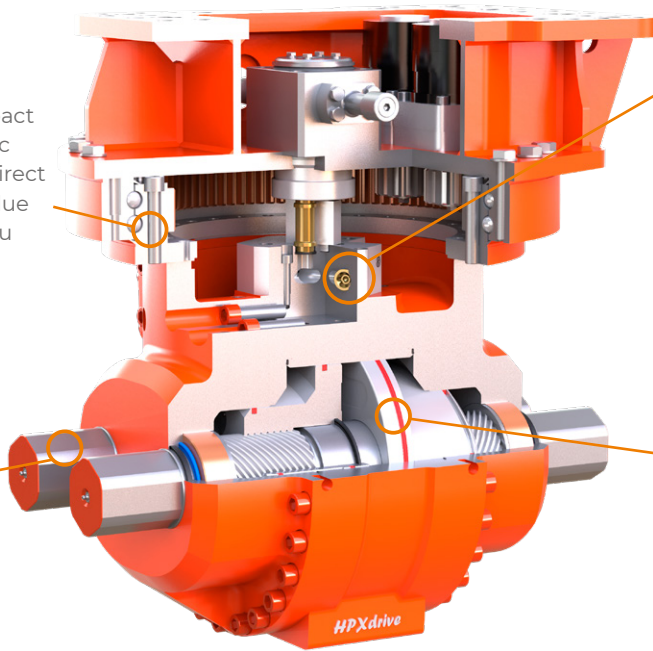
D-Series with *HPXdrive* up to 40t



SAFETY:
VALVES

FUNCTION:
ONE UNIT

The Kinshofer rotation and the HPXdrive are forming one compact unit. There are no short hydraulic hoses necessary thanks to the direct connection. There are no leaks due to broken hoses possible and you can thus use the grab in water protection zones.



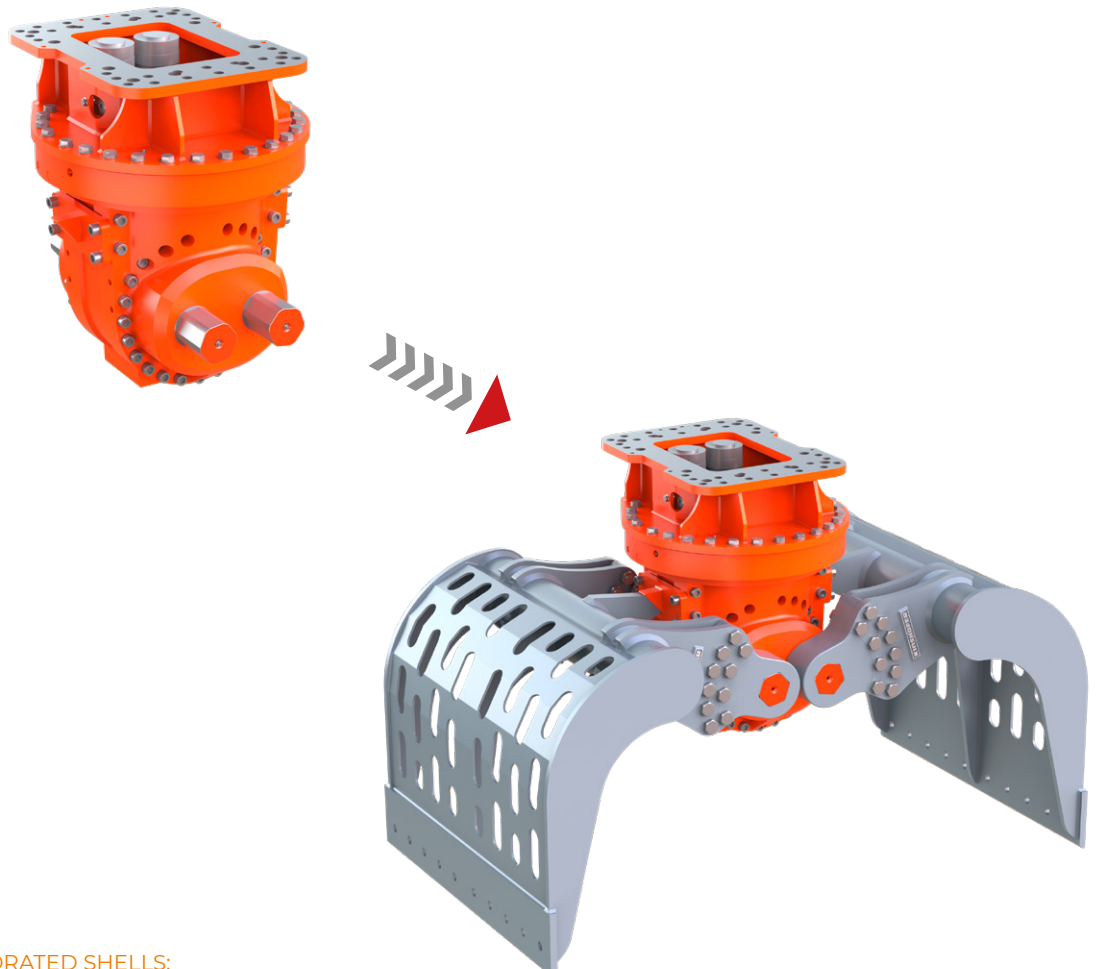
An integrated non-return valve guarantees the secure retention of loads. The grab is maintenance-low as the drive unit itself has no grease points, saving time and consumables.

SHELL EXCHANGE SYSTEM:
SHAFT

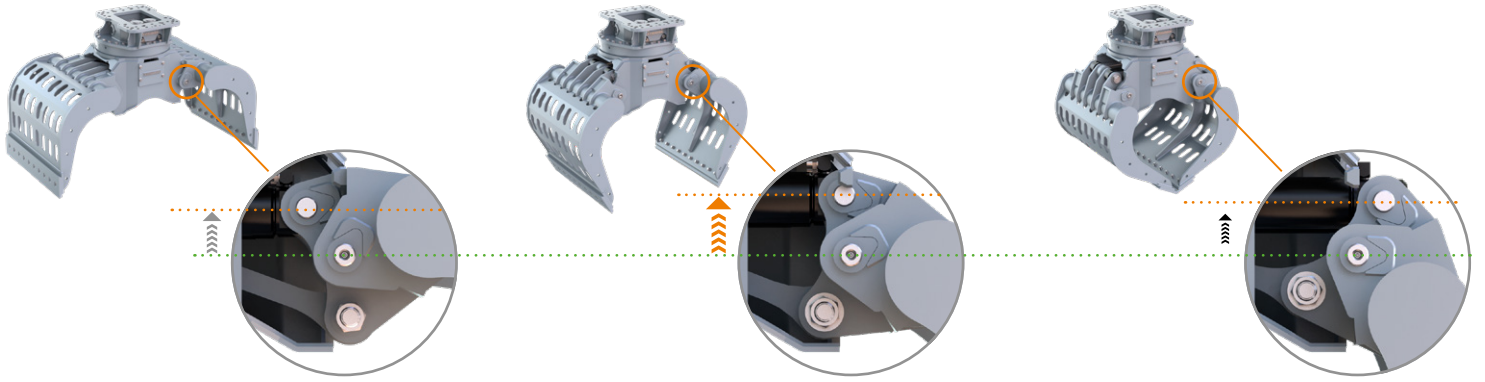
By loosening the shell bolts, the shells can be exchanged. The drive unit itself remains untouched. You can thus change e.g. to another width or shell version.

DESIGN:
SHAFT & PISTON

Absolute shell synchronisation without compensation rods. The torque is generated by two pistons, which run opposed and have four helix threads. The force is delivered to two shafts, on which the shells are mounted.



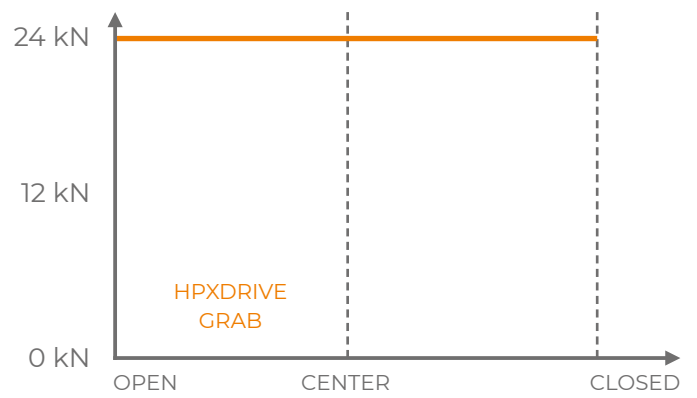
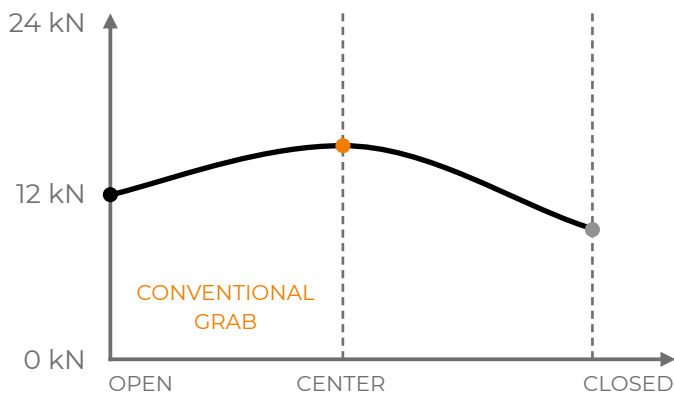
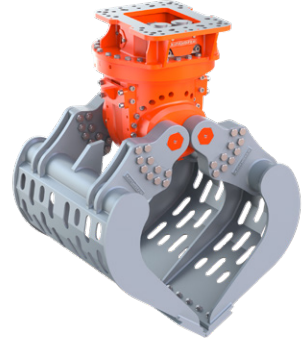
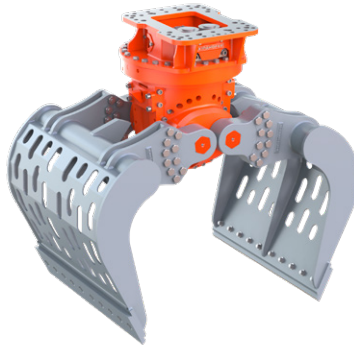
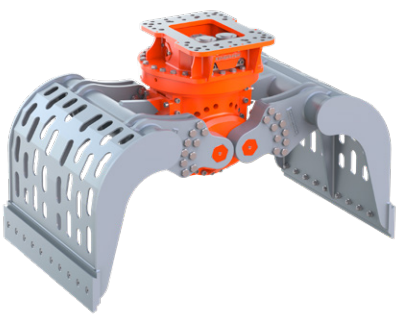
D27HPX WITH PERFORATED SHELLS:
DEMOLITION AND SORTING GRAB with HPXdrive



OPEN SHELLS:

HALF OPEN SHELLS:

CLOSED SHELLS:



CLOSING FORCE CURVE – Note: closing forces refer to an operating pressure of 26 MPa (260 bar).
 At an oil flow of 50 l/min the cycle time open/close is 1,9 sec.



The new demolition and sorting grabs for excavators with 1t to 6t operating weight – THE universal tool for lighter demolition and sorting tasks of all kinds.

- ▶ New **improved shell design!**
- ▶ Including **360° rotator** with **low height**.
- ▶ **Perforated skin of shells** lets dust and gravel through.
- ▶ **Durable**, extremely robust due to the use of cutting edge material 500 HB steel.
- ▶ **Integrated non-return valve** guarantees secure retention of loads.
- ▶ **High closing force** achieved by horizontal cylinder (D02: 18,3 kN at 220 bar / D04: 21,5 kN and D06: 21 kN at 250 bar).



Demolition and Sorting Grab D02H / D04H / D06H

Type	Width (mm)	Opening A (mm)	Height C max. (mm)	Volume (liter)	Capacity*		Weight (kg)	Operating weight (t)
					form locking (kg)	friction locking (kg)		
D02H-35	370	880	520	35	1250	750	115	1 - 2
D04H-40	420	1212	747	60	1500	1000	200	2 - 4
D06H-45	470	1345	817	90	2000	1000	227	4 - 6

*) the load capacity indicated depends on the characteristics of the load (surface, largeness etc.)

Package consists of: demolition and sorting grab, **KINSHOFER** rotator, non-return valve, wear plates

KINSHOFER Rotator

Continuous rotation and two oil passages. Overload protection is ensured by pressure relief valves.

Type	Upper dimension (hole/Ø-hole pattern) (mm)	Torque (Nm)	Bending moment max. (Nm)
D02H: KM 04 F140/150	10 x M 12 / Ø 150	850	3000
D04H - D06H: KM 10 F214/180	6 x M 16 / Ø 180	1000	12000

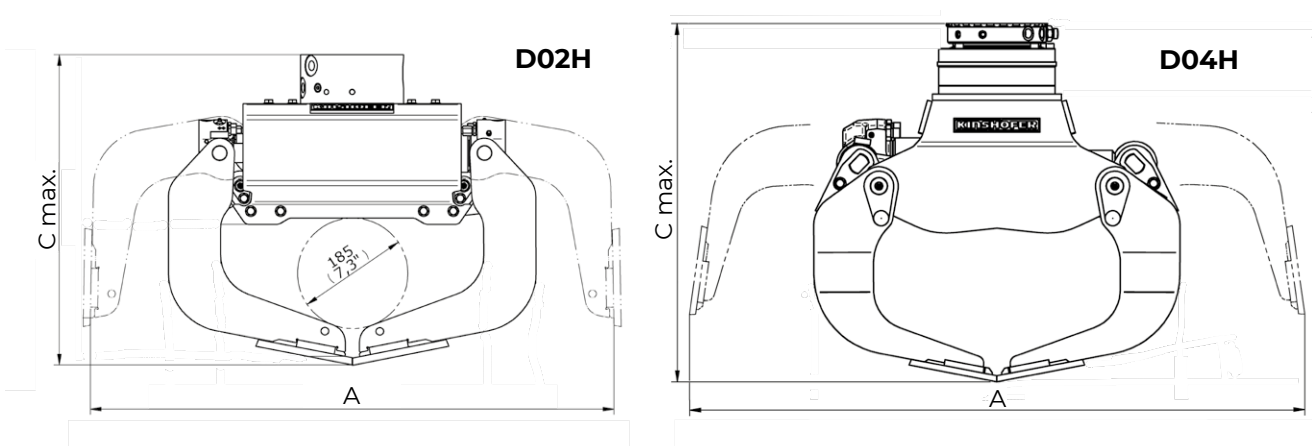
Accessories

Type	Description
KM 691 2t	adapter plate for specific solutions – up to 2t
KM 690 2t	adapter for rigid mounting – up to 2t
KM 691 8t	adapter plate for specific solutions – up to 8t
KM 690 8t	adapter for rigid mounting – up to 8t
KSW01 rigid	bolt-on adapter for system L-Lock KMS01L/KHS01L for rigid mounting – up to 2t
KSW03 rigid	bolt-on adapter for system L-Lock KMS03L/KHS03L for rigid mounting – up to 6t
	adapters for quick change systems from other manufacturers or different sizes on request
KM 980-2 2t-8t c	solenoid valve for additional circuit, up to 26 MPa, incl. parts and mounting
KM 685 05-D02-A02	4-grip for D02/A02 (load capacity: 750 kg)
KM 685 05-D04/06-A04/06	4-grip for D04/A04 and D06/A06 (load capacity: 750 kg)

Requirements of carrier machine

	D02H	D04H	D06H
Operating pressure (open/close):	max. 22 MPa (220 bar)	max. 25 MPa (250 bar)	max. 25 MPa (250 bar)
Recommended pump capacity (open/close):	10 - 40 l/min	25 - 75 l/min	25 - 75 l/min
Operating pressure (rotate):	max. 32 MPa (320 bar)	max. 32 MPa (320 bar)	max. 32 MPa (320 bar)
Recommended pump capacity (rotate):	10 - 40 l/min	15 - max. 50 l/min	15 - max. 50 l/min

Technical drawing



The new demolition and sorting grabs for excavators with 6t to 9t operating weight – THE universal tool for lighter demolition and sorting tasks of all kinds.

- ▶ New **improved shell design!**
- ▶ Including **360° rotator** with **low height**.
- ▶ **Perforated skin of shells** lets dust and gravel through.
- ▶ **Durable**, extremely robust due to the use of cutting edge material 500 HB steel.
- ▶ **Integrated non-return valve** guarantees secure retention of loads.
- ▶ **High closing force** achieved by horizontal cylinder (24 kN at 250 bar).



Demolition and Sorting Grab D09H

Type	Width E (mm)	Opening A (mm)	Height C max. (mm)	Volume (liter)	Load capacity* form locking (kg)	Load capacity* friction locking (kg)	Weight (kg)
D09H-50	520	1665	973	165	2500	1500	355

*) the load capacity indicated depends on the characteristics of the load (surface, largeness etc.)

Package consists of: demolition and sorting grab, **KINSHOFER** rotator, non-return valve, wear plates

KINSHOFER Rotator

Continuous rotation and two oil passages. Overload protection is ensured by pressure relief valves.

Type	Upper dimension (hole/Ø-hole pattern) (mm)	Torque (Nm)	Bending moment max. (Nm)
KM 15 F273/273	10 x M16 / Ø 273	2000	50000

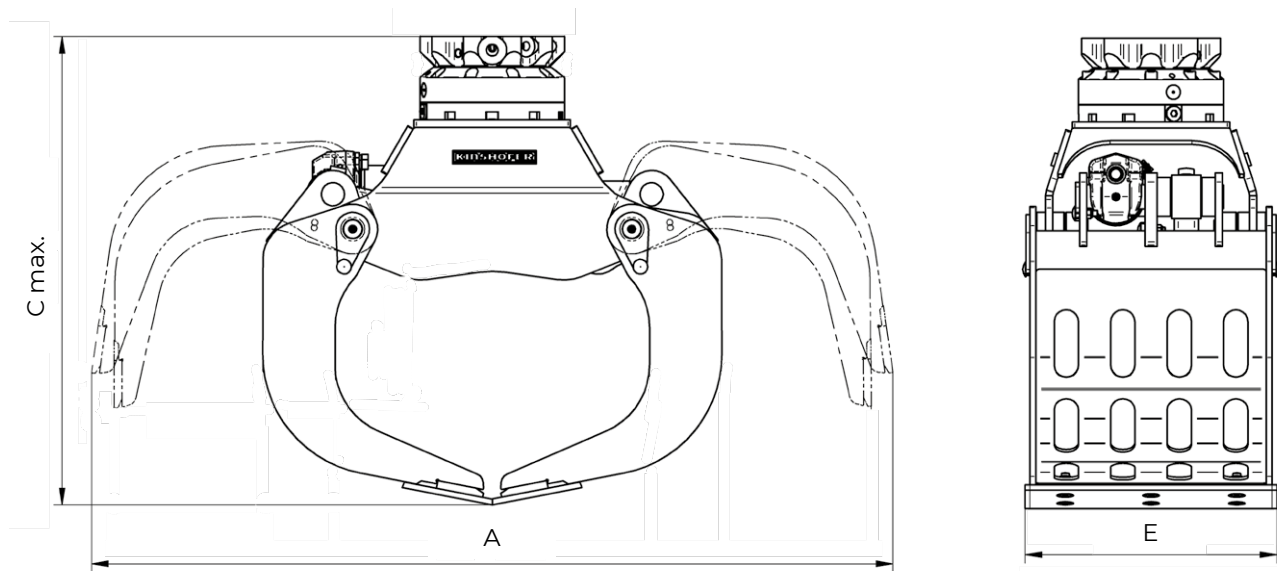
Accessories

Type	Description
KM 691 8t	adapter plate for specific solutions – up to 8t
KM 690 8t	adapter for rigid mounting – up to 8t
KSW08 rigid	bolt-on adapter for system L-Lock KMS08L/KHS08L for rigid mounting – up to 12t
	adapters for quick change systems from other manufacturers or different sizes on request
KM 980-2 2t-8t c	solenoid valve for additional circuit, up to 26 MPa, incl. parts and mounting
KM 685 05-D09-A09	4-grip for D09 and A09 (load capacity: 750 kg)

Requirements of carrier machine

Operating pressure (open/close):	max. 32 MPa (320 bar)
Recommended pump capacity (open/close):	25 - 75 l/min
Operating pressure (rotate):	max. 32 MPa (320 bar)
Recommended pump capacity (rotate):	20 - max. 50 l/min

Technical drawing

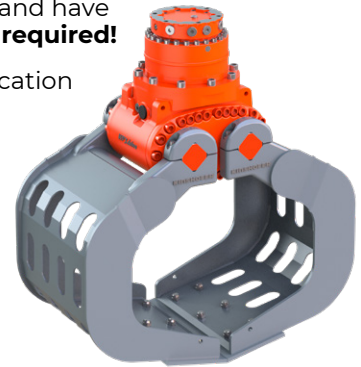


D04 - D06HPX

Demolition and Sorting Grab with *HPXdrive*

The new demolition and sorting grabs with the low maintenance *HPXdrive* for excavators up to 4t or 6t operating weight – THE universal tool for all kind of light demolition and sorting work.

- ▶ ***HPXdrive*** – the revolutionary concept for hydraulically operated grabs! The rotation of the arms of the grab is generated by two hollow shafts, which run opposed and have a helix thread, hydraulically driven by a single piston. **No hydraulic cylinder required!**
- ▶ **50% longer life cycle.** The drive unit runs in a permanent oil bath – no lubrication necessary. Resistant against dirt and blows, due to the compact design.
- ▶ New **improved shell design!** The perforated skin of the shells lets dust and fine gravel through – without larger pieces blocking the shell filter system.
- ▶ Including the new, flat 10t-rotator with **360° endless rotation** for precise positioning!
- ▶ **Constant closing force** (18 kN at D04: 250 bar and D06: 260 bar) during the entire operation.
- ▶ Different applications possible thanks to easy **shell exchange system.**
- ▶ Robust due to the use of cutting edge material 500 HB steel. **Cutting edges usable both sides.**



D06HPX

Demolition and Sorting Grab D04HPX / D06HPX

Type	Width (mm)	Opening A (mm)	Height C max. (mm)	Volume (liter)	Weight (kg)	Load capacity* form locking (kg)	Load capacity* friction locking (kg)	Operating weight (t)
D04HPX-40	420	1045	812	75	280	1500	1000	2 - 4
D06HPX-45	470	1350	970	150	340	2000	1000	4 - 6

*) the load capacity indicated depends on the characteristics of the load (surface, largeness etc.)

Package consists of: demolition and sorting grab, **KINSHOFER** rotator, non-return valve, wear plates

KINSHOFER Rotator

Integrated in a single unit with the *HPXdrive*, no more connecting hoses. Continuous rotation. Overload protection ensured by pressure relief valves.

Type	Upper dimension (hole/Ø-hole pattern) (mm)	Torque (Nm)	Bending moment max. (Nm)
KM 10 F214/180	6 x M16 / Ø 180	1000	12000

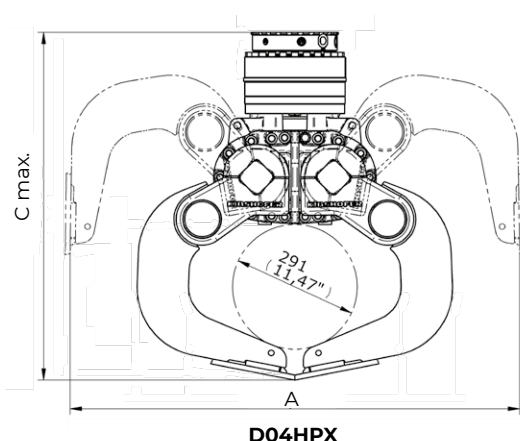
Accessories

Type	Description
KM 691 8t	adapter plate for specific solutions – up to 8t
KM 690 8t	adapter for rigid mounting – up to 8t
KSW03 rigid	bolt-on adapter for system L-Lock KMS03L/KHS03L for rigid mounting – up to 6t
	adapters for quick change systems from other manufacturers or different sizes on request
KM 980-2 2t-8t c	solenoid valve for additional circuit, up to 26 MPa, incl. parts and mounting
KM 685 05-D04/A04 and D06/A06	4-grip for D04/A04 and D06/A06 (load capacity: 750 kg)

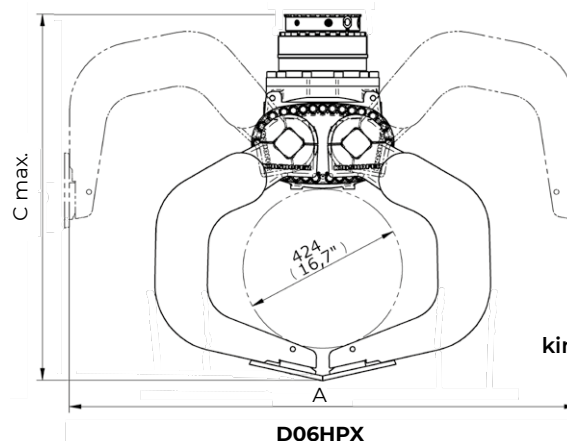
Requirements of carrier machine

	D04HPX	D06HPX
Operating pressure (open/close):	max. 25 MPa (250 bar)	max. 32 MPa (320 bar) internal pressure 26 MPa (260 bar)
Recommended pump capacity (open/close):	40 - max. 75 l/min	40 - max. 75 l/min
Operating pressure (rotate):	max. 32 MPa (320 bar)	max. 32 MPa (320 bar)
Recommended pump capacity (rotate):	15 - max. 50 l/min	20 - max. 50 l/min

Technical drawing



D04HPX



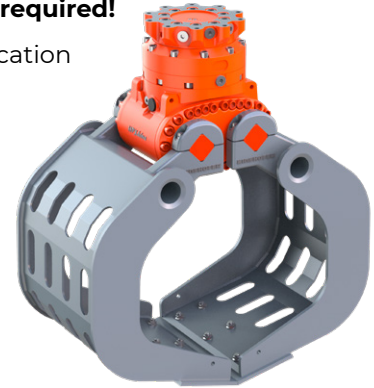
D06HPX



Free extension of warranty
kinshofer.com/service

The new demolition and sorting grabs with the low maintenance *HPXdrive* for excavators up to 9t operating weight – THE universal tool for all kind of light demolition and sorting work.

- ▷ ***HPXdrive*** – the revolutionary concept for hydraulically operated grabs! The rotation of the arms of the grab is generated by two hollow shafts, which run opposed and have a helix thread, hydraulically driven by a single piston. **No hydraulic cylinder required!**
- ▷ **50% longer life cycle.** The drive unit runs in a permanent oil bath – no lubrication necessary. Resistant against dirt and blows, due to the compact design.
- ▷ New **improved shell design!** The perforated skin of the shells lets dust and fine gravel through – without larger pieces blocking the shell filter system.
- ▷ Including the flat 15t-rotator with **360° endless rotation** for precise positioning!
- ▷ **Constant closing force** (15,3 kN at 260 bar) during the entire operation.
- ▷ Different applications possible thanks to easy **shell exchange system.**
- ▷ Robust due to the use of cutting edge material 500 HB steel.
Cutting edges usable both sides.



Demolition and Sorting Grab D09HPX

Type	Width E (mm)	Opening A (mm)	Height C max. (mm)	Volume (liter)	Weight (kg)	Load capacity* form locking (kg)	Load capacity* friction locking (kg)
D09HPX-50	520	1545	1061	220	415	2500	1000

*) the load capacity indicated depends on the characteristics of the load (surface, largeness etc.)

Package consists of: demolition and sorting grab, **KINSHOFER** rotator, non-return valve, wear plates

KINSHOFER Rotator

Integrated in a single unit with the *HPXdrive*, no more connecting hoses. Continuous rotation. Overload protection ensured by pressure relief valves.

Typ	Upper dimension (hole/Ø-hole pattern) (mm)	Torque (Nm)	Bending moment max. (Nm)
KM 15 F273/273	10 x M16 / Ø 273	2000	50000

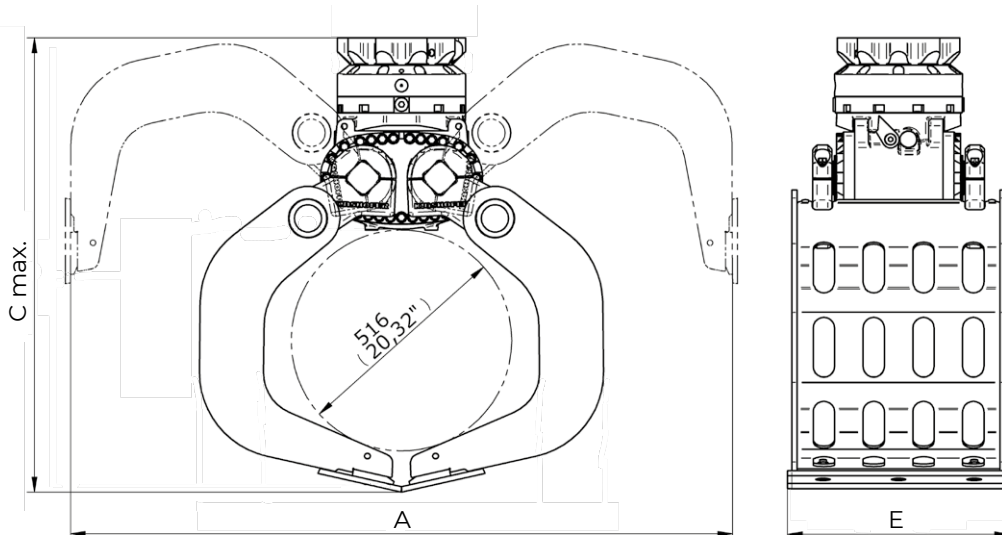
Accessories

Type	Description
KM 691 8t	adapter plate for specific solutions – up to 8t
KM 690 8t	adapter for rigid mounting – up to 8t
OQ45/4 rigid	bolt-on adapter for Oilquick OQ45 – 5t to 12t
KSW08 rigid	bolt-on adapter for system L-Lock KMS08L/KHS08L for rigid mounting – up to 12t
	adapters for quick change systems from other manufacturers or different sizes on request
KM 980-2 2t-8t c	solenoid valve for additional circuit, up to 26 MPa, incl. parts and mounting
KM 685 05-D09-A09	4-grip for D09 and A09 (load capacity: 750 kg)

Requirements of carrier machine

Operating pressure (open/close):	max. 32 MPa (320 bar) / internal pressure 26 MPa (260 bar)
Recommended pump capacity (open/close):	40 - max. 75 l/min
Operating pressure (rotate):	max. 32 MPa (320 bar)
Recommended pump capacity (rotate):	20 - max. 50 l/min

Technical drawing



Free extension
of warranty
kinshofer.com/service

D12H-P

Demolition and Sorting Grab with cylinder 8 - 12t

Robust multi purpose grabs for excavators from 8t to 12t operating weight. Well-suited for demolition and separation of all kinds of building materials and waste.

- ▶ Including flat 15t rotator – **low height!** Integrated **non-return valve** to avoid peak-pressures.
- ▶ **High closing force** (36 kN) thanks to two horizontal cylinders, completely protected by the shell carrier.
- ▶ The **end position** (grab open) is **hydraulically cushioned** to avoid damage to the cylinder when the grab is pushed into the material.
- ▶ The grab features a **perforated skin** to let fine dust and debris through without larger pieces getting caught. The durable, replaceable and **indexable wear blades** (500HB) enable the grabs to pinch with their edges without excessive wear.



Demolition and Sorting Grab D12H-P

Type	Width E (mm)	Opening A (mm)	Height C max. (mm)	Height C min. (mm)	Volume (liter)	Weight (kg)	Load capacity (kg)
D12H-P-60	600	1550	1125	980	225	470	3000

Package consists of: demolition and sorting grab, **KINSHOFER** rotator, non-return valve, wear plates

KINSHOFER Rotator

Continuous rotation and two oil passages. Overload protection is ensured by pressure relief valves.

Type	Upper dimension (hole/Ø-hole pattern) (mm)	Torque (Nm)	Bending moment max. (Nm)
KM 15 F273/273	10 x M16 / Ø 273	2000	50000

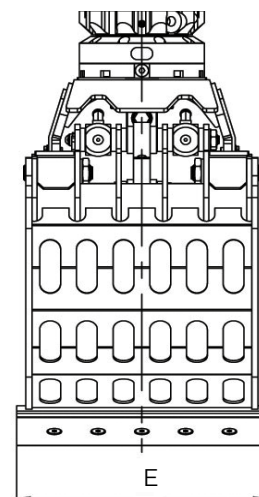
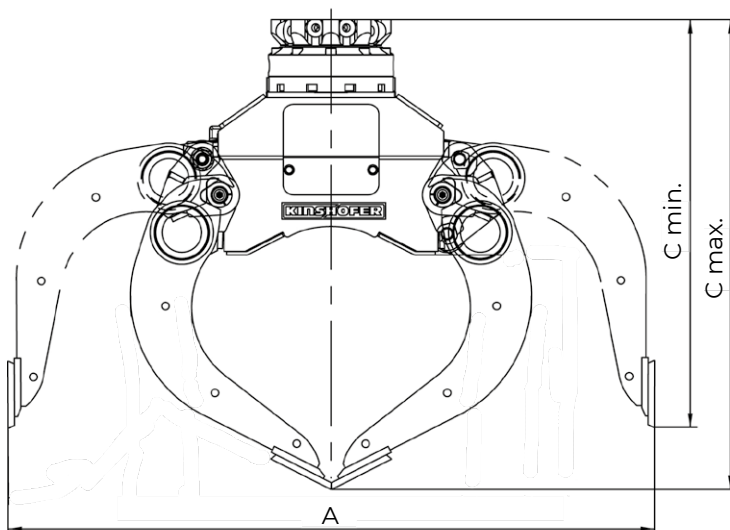
Accessories

Type	Description
KM 690 15t	adapter for rigid mounting – up to 15t
OQ45/4 rigid	bolt-on adapter for Oilquick OQ45 – 5t to 12t
KSW08 rigid	bolt-on adapter for system L-Lock KMS08L/KHS08L for rigid mounting – up to 12t
	adapters for quick change systems from other manufacturers or different sizes on request
KM 980-2 2t-8t c	solenoid valve for additional circuit, up to 26 MPa, incl. parts and mounting

Requirements of carrier machine

Operating pressure (open/close):	max. 32 MPa (320 bar)
Recommended pump capacity (open/close):	75 - max. 150 l/min
Hydraulic connection (open/close):	G 3/4" / G 1/2"
Operating pressure (rotate):	max. 20 MPa (200 bar)
Recommended pump capacity (rotate):	max. 60 l/min

Technical drawing



Robust universal grab with *HPXdrive* for excavators with up to 37t operating weight. Well-suited for demolition and separation of all kinds of building materials and waste,

▷ ***HPXdrive* – the revolutionary concept for hydraulically operated grabs!**

The rotation of the arms of the grab is generated by two hollow shafts, which run opposed and have a helix thread, hydraulically driven by a single piston. **No hydraulic cylinder required.**

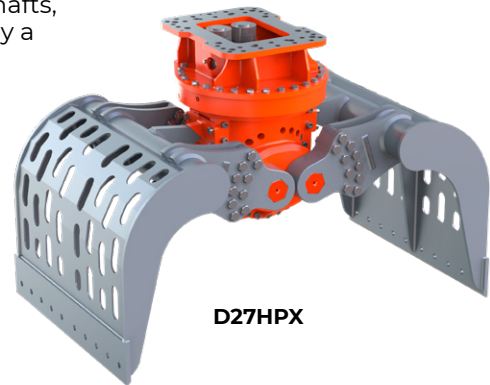
▷ **50% longer life cycle.** The drive unit runs in a permanent oil bath – no lubrication necessary. Resistant against dirt and blows due to the compact design.

▷ **Constant closing forces** during the entire opening and closing process.

▷ With **integrated rotation:** Swivel and bevel sealed. Rotary feedthrough and motor accessible directly. Also as **version with integrated OQ-adaptor.**

▷ **Integrated pressure relief valve** to avoid peak-pressures.

▷ The grabs feature **perforated shells** to let fine dust and debris through without larger pieces getting caught. The **durable, replaceable and indexable wear blades** (500HB) enable the grabs to pinch with their edges without excessive wear.



D27HPX

Demolition and Sorting Grab with <i>HPXdrive</i> D27HPX / D32HPX / D37HPX									
Type	Width E (mm)	Opening A (mm)	Height C max. (mm)	Height C min. (mm)	Volume (liter)	Weight (kg)	Load capacity (kg)	Closing force (kN)	Operating weight (t)
D27HPX-120	1200	2000	1900	1320	890	2100	9000	79	20 – 27
D32HPX-120	1200	2150	1880	1420	955	2115	9000	72	25 – 32
D37HPX-125	1250	2250	1930	1420	1100	2300	9000	69	32 – 37

Package consists of: demolition and sorting grab, integrated rotation, wear blades and non-return valve

Demolition and Sorting Grab with <i>HPXdrive</i> and OQ-adaptor D27HPX / D32HPX / D37HPX									
Type	Width E (mm)	Opening A (mm)	Height C max. (mm)	Height C min. (mm)	Volume (liter)	Weight (kg)	Load capacity (kg)	Closing force (kN)	Operating weight (t)
D27HPX-OQ70/55	1200	2000	1925	1460	890	2395	9000	79	20 – 27
D32HPX-OQ70/55	1200	2150	2045	1585	955	2435	9000	72	25 – 32
D32HPX-OQ80	1200	2150	2045	1585	955	2435	9000	72	25 – 32
D37HPX-OQ80	1250	2250	2045	1585	1100	2490	9000	69	32 – 37

Package consists of: demolition and sorting grab, integrated rotation with OQ-adaptor, wear blades and non-return valve

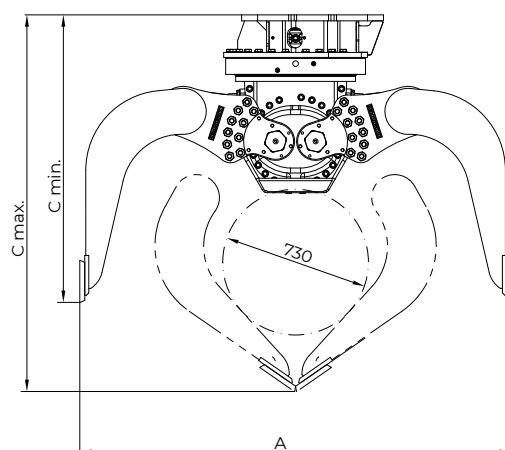
Accessories

Type	Description
KM 690 27t	adapter for rigid mounting – up to 27t
KM 690 32t	adapter for rigid mounting – up to 32t
KM 690 40t	adapter for rigid mounting – up to 40t
KSW21/25 rigid	bolt-on-adapter for system L-Lock KMS21/25L / KHS21/25L – up to 40t
	adapters for quick change systems from other manufacturers or different sizes available on request

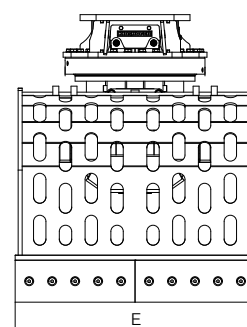
Requirements of carrier machine

Operating pressure (open/close):	max. 35 MPa (350 bar)
Pump capacity (open/close):	100 - 300 l/min
Operating pressure (rotate):	max. 25 MPa (250 bar)
Pump capacity (rotate):	D27: 40 l/min / D32-D37: 40 - max. 60 l/min
Cycle times @ 200 l/min (open/close):	1,2/1,2 sec.

Technical drawings

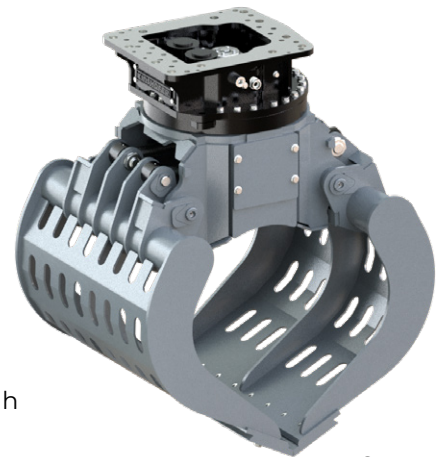


D32HPX



Robust Demolition and Sorting Grabs for excavators from 10t to 37t operating weight. Well-suited for demolition and separation of all kinds of building materials and waste.

- ▷ **Robust, fully integrated rotation** with sturdy slewing ring to withstand external forces, with connecting hoses located inside the hub. Hydraulic quick change adapters are directly mountable to the head plate. Different bolt patterns are available. **Integrated pressure relief valve** to avoid peak-pressures in rotation motor(s).
- ▷ **Exceptional closing forces** provided by two horizontal hydraulic cylinders which are well protected by the carrier.
- ▷ The **end position (grab open)** is **hydraulically cushioned** to avoid damage to the cylinder when the grab is pushed into the material.
- ▷ The grabs feature **perforated shells** to let fine dust and debris through without larger pieces getting caught. The **durable, replaceable and indexable wear blades** (500HB) enable the grabs to pinch with their edges without excessive wear.



D24H-P

Demolition and Sorting Grabs D15H-P / D20H-P / D24H-P / D27H-P / D37H-P

Type	Width E (mm)	Opening A (mm)	Height C max. (mm)	Height C min. (mm)	Volume (liter)	Weight (kg)	Load capacity (kg)	Closing force (kN)	Operating weight (t)
D15H-P-80	800	1550	1215	1070	300	630	4000	27	10 – 15
D20H-P-100	1000	1890	1400	1205	450	1120	5000	43	14 – 20
D24H-P-100	1000	2005	1470	1235	650	1175	5000	42	18 – 24
D27H-P-115	1150	2145	1575	1375	800	1600	6000	63	20 – 27
D32H-P-120	1200	2200	1590	1460	900	2050	8000	89	27 – 32
D37H-P-125	1250	2260	1620	1480	950	2100	8000	86	32 – 37

Package consists of: demolition and sorting grab, integrated rotation with sturdy slewing ring, wear blades and non-return valve

Accessories

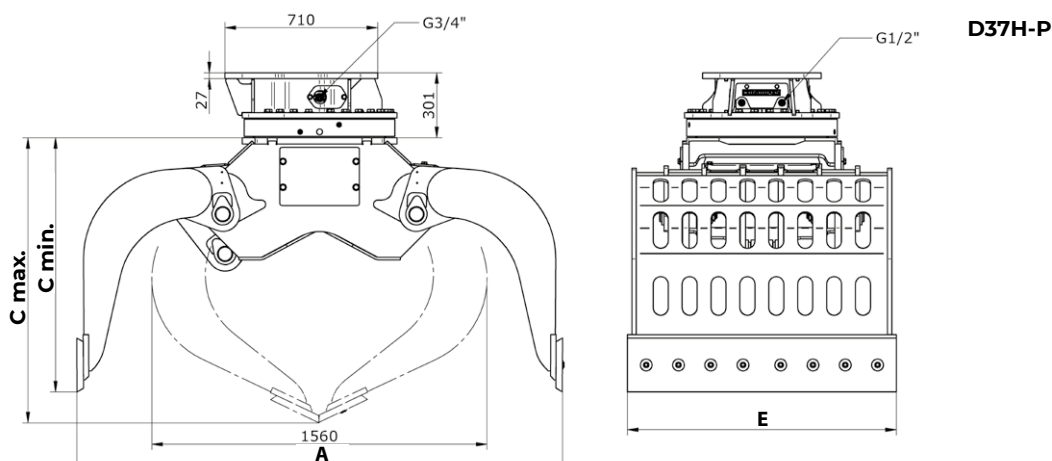
Type	Description
KM 690 15t	adapter for rigid mounting – up to 15t
KM 690 20t	adapter for rigid mounting – up to 20t
KM 690 27t	adapter for rigid mounting – up to 27t
KM 690 32t	adapter for rigid mounting – up to 32t
OQ	bolt-on-adapter for Oilquick – up to 70t available
KSW10 rigid	bolt-on-adapter for system L-Lock KMS10L/KHS10L – up to 19t
KSW21/25 rigid	bolt-on-adapter for system L-Lock KMS21/25L / KHS21/25L – up to 40t

adapters for quick change systems from other manufacturers or different sizes available on request

Requirements of carrier machine

Operating pressure (open/close):	D15 - D20: max. 32 MPa (320 bar); D24 - D37: max. 35 MPa (350 bar)
Pump capacity (open/close):	D15 - D37: 75 - max. 150 l/min
Hydraulic connections (rotate):	D15 - D20: G 3/4" / G 1/2"; D24 - D37: G 1" / G 1/2"
Operating pressure (rotate):	D15 - D37: max. 14 MPa (140 bar)
Pump capacity (rotate):	D15 - D37: max. 50 l/min

Technical drawings

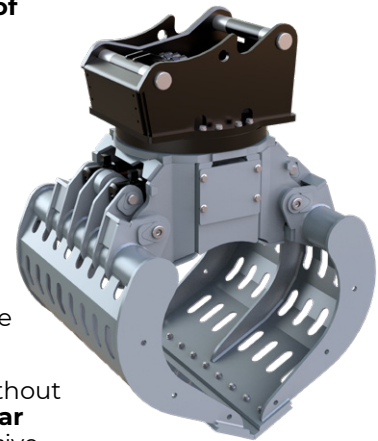


Demolition and Sorting Grabs with Q-Lock

D24H-P-OQ to
D37H-P-OQ

Robust Demolition and Sorting Grabs for excavators from 20t to 37t operating weight. Well-suited for demolition and separation of all kinds of building materials and waste, including an integrated Q-Lock adapter.

- ▷ **Robust, fully integrated rotation** with sturdy slewing ring to withstand external forces, with connecting hoses located inside the hub. **Integrated pressure relief valve** to avoid peak-pressures.
- ▷ **Q-Lock quick change adapter integrated**, providing a low height.
- ▷ **Exceptional closing forces** provided by two horizontal hydraulic cylinders which are well protected by the carrier.
- ▷ The **end position (grab open)** is **hydraulically cushioned** to avoid damage to the cylinder when the grab is pushed into the material.
- ▷ The grabs feature **perforated shells** to let fine dust and debris through without larger pieces getting caught. The **durable, replaceable and indexable wear blades** (500HB) enable the grabs to pinch with their edges without excessive wear.



D20H-P-OQ65

Grab with integrated Quick Change Adapter D24H-P-OQ to D37H-P-OQ

Type	Width E (mm)	Opening A (mm)	Height C max. (mm)	Height C min. (mm)	Volume (liter)	Weight (kg)	Load capacity (kg)	Closing force (kN)	Operating weight (t)
D20H-P-OQ65	1000	1890	-	1320	450	1060	5000	43	14 – 20
D24H-P-OQ65	1000	2005	-	1350	650	1120	5000	42	18 – 24
D27H-P-OQ70/55	1150	2140	1700	1500	800	1500	6000	63	20 – 27
D32H-P-OQ70/55	1200	2200	1710	1580	900	1960	8000	89	27 – 32
D32H-P-OQ80	1200	2200	1750	1620	900	2000	8000	89	27 – 32
D37H-P-OQ80	1250	2260	1750	1610	950	2100	8000	86	32 – 37

Package consists of: demolition and sorting grab, integrated rotation with OQ-adapter, wear blades and non-return valve

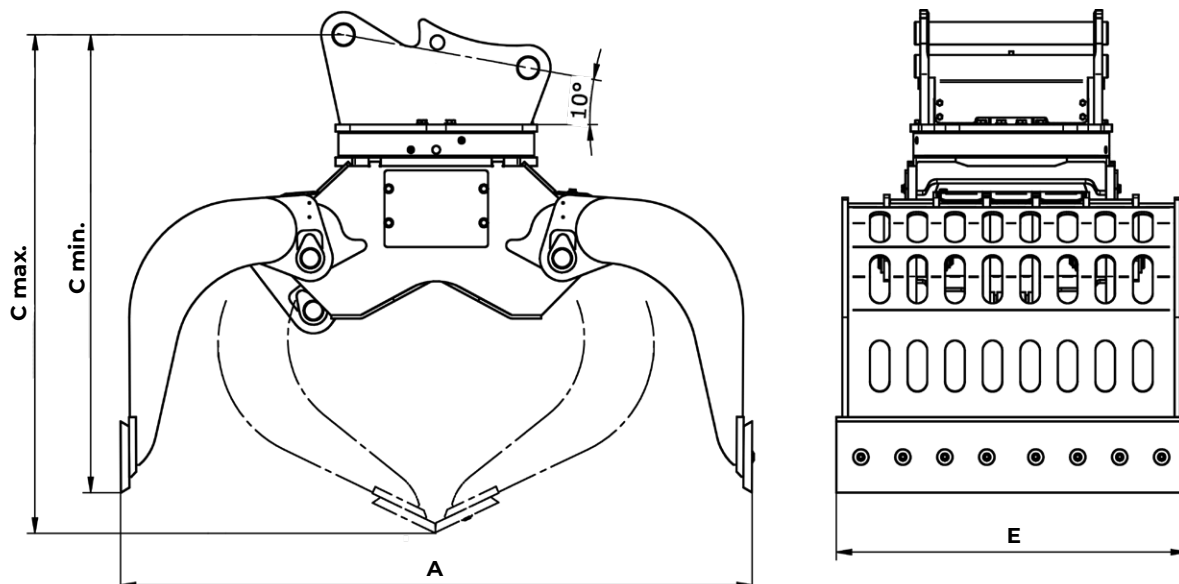
Other sizes on request

Requirements of carrier machine

Operating pressure (open/close):	D20/D24: max. 32 MPa (320 bar); D27/D37: max. 35 MPa (350 bar)
Pump capacity (open/close):	75 - max. 150 l/min
Operating pressure (rotate):	D20/D24: max. 25 MPa (250 bar); D27/D37: max. 14 MPa (140 bar)
Pump capacity (rotate):	max. 50 l/min

Technical drawings

D37H-P-OQ80

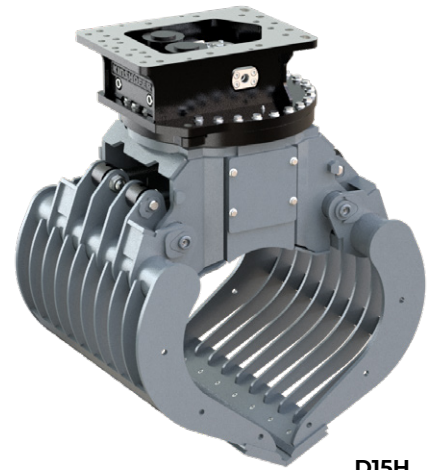


D15H to D27H

Demolition and Sorting Grabs 10 - 27t

Robust Demolition and Sorting Grabs for excavators from 10t to 27t operating weight. Well-suited for demolition and separation of all kinds of building materials and waste.

- ▷ **Robust, fully integrated rotation** with sturdy slewing ring to withstand external forces, with connecting hoses located inside the hub. Hydraulic quick change adapters are directly mountable to the head plate. Different bolt patterns are available. **Integrated pressure relief valve** to avoid peak-pressures in rotation motor(s).
- ▷ **Exceptional closing forces** provided by two horizontal hydraulic cylinders which are well protected by the carrier.
- ▷ The **end position (grab open)** is **hydraulically cushioned** to avoid damage to the cylinder when the grab is pushed into the material.
- ▷ The grabs feature **metal ribs** to let fine dust and debris through without larger pieces getting caught. The **durable, replaceable and indexable wear blades** (500HB) enable the grabs to pinch with their edges without excessive wear.



D15H

Demolition and Sorting Grabs D15H / D20H / D27H

Type	Width E (mm)	Opening A (mm)	Height C max. (mm)	Height C min. (mm)	Volume (liter)	Weight (kg)	Load capacity (kg)	Closing force (kN)	Operating weight (t)
D15H-80	800	1545	1215	1070	300	670	4000	27	10 - 15
D20H-100	1000	1890	1405	1210	450	1150	5000	43	14 - 20
D27H-115	1150	2145	1575	1375	800	1700	6000	63	20 - 27

Package consists of: demolition and sorting grab, integrated rotation with sturdy slewing ring, wear blades and non-return valve

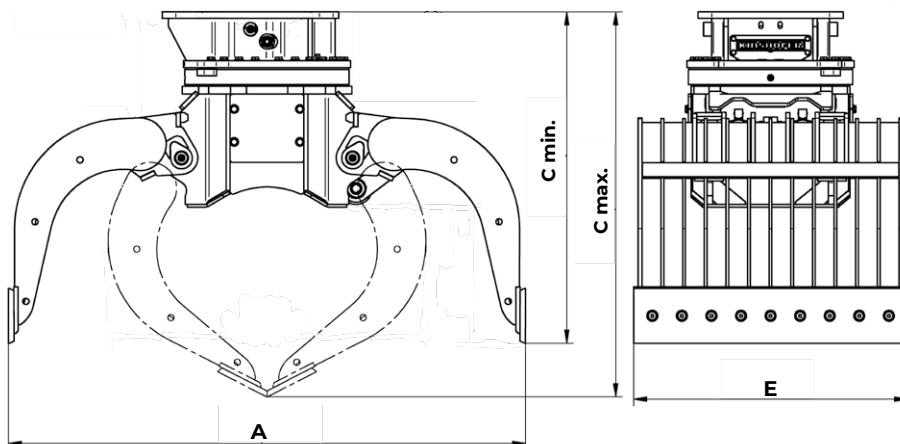
Accessories

Type	Description
KM 690 15t	adapter for rigid mounting – up to 15t
KM 690 20t	adapter for rigid mounting – up to 20t
KM 690 27t	adapter for rigid mounting – up to 27t
OQ	bolt-on-adapter for Oilquick – up to 70t available
KSW10 rigid	bolt-on-adapter for system L-Lock KMS10L/KHS10L – up to 19t
KSW21/25 rigid	bolt-on-adapter for system L-Lock KMS21/25L / KHS21/25L – up to 40t
	adapters for quick change systems from other manufacturers or different sizes available on request

Requirements of carrier machine

Operating pressure (open/close):	D15 - D20: max. 32 MPa (320 bar); D27: max. 35 MPa (350 bar)
Pump capacity (open/close):	D15 - D27: 75 - max. 150 l/min
Hydraulic connections (rotate):	D15 - D20: G 3/4" / G 1/2"; D27: G 1" / G 1/2"
Operating pressure (rotate):	D15 - D27: max. 14 MPa (140 bar)
Pump capacity (rotate):	D15 - D27: max. 50 l/min

Technical drawings

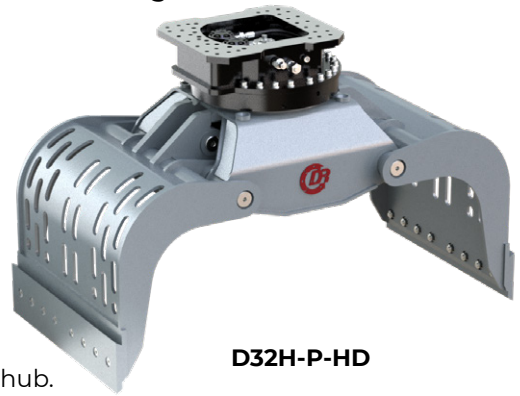


D20H

Demolition and Sorting Grabs HD D15H-P HD to D70H-P HD

Robust multi-purpose grab with perforated shells, for excavators from 10t up to 80t operating weight, the HD D Series grabs are ideal for demolition and sorting of all kinds of building materials.

- ▷ Robust Delta-box frame with dust-proof axle bearing points.
- ▷ Perforated shells let fine dust and gravel through without large pieces getting caught.
- ▷ Durable and reversible cutting edges, made of Cracox Plus 450 steel can be used to pick up different materials, with their tips.
- ▷ Cutting edges on D19 series and higher can be turned three ways, reducing replacement costs.
- ▷ Robust, fully integrated rotator with sturdy slewing ring to withstand external forces, with pressure relief valve to ensure overload protection, and connecting hoses protected inside the hub.
- ▷ Exceptional closing forces achieved with a horizontally positioned hydraulic cylinder that is protected by the bucket carrier.
- ▷ Cylinder is hydraulically cushioned.



D32H-P-HD

Heavy Duty Demolition and Sorting Grabs with perforated shells D15H-P-75HD to D70H-P150HD

Type	Width E (mm)	Opening A (mm)	Height C (mm)	Volume (litre)	Weight (kg)	Load (kg)	Closing force (kN)	Torque (Nm)	Operating weight (t/lbs)
D15H-P-75HD	750	1730	1295	340	860	5000	43	3000	10 – 18
D16H-P-90HD	900	1730	1295	415	900	5500	43	3000	12 – 20
D19H-P-85HD	850	1755	1320	365	1030	6500	50	3000/5700*	12 – 24
D20H-P-100HD	1000	1895	1400	460	1120	7000	50	3000/5700*	13 – 25
D24H-P-100HD	1000	1990	1455	570	1315	8000	56	3000/5700*	15 – 30
D25H-P-100HD	1000	2050	1440**	650	1450***	7000	60	5700**	18 – 28
D27H-P-120HD	1200	2050	1440**	760	1495***	8000	60	5700**	20 – 30
D32H-P-110HD	1100	2195	1565	825	1820	10500	70	7000**	20 – 40
D40H-P-125HD	1250	2355	1640	960	2210	13500	80	7000**	25 – 50
D50H-P-140HD	1400	2355	1650	1075	2330	16500	80	7000**	35 – 60
D70H-P-150HD	1500	2730	1930	1660	4000	23500	140	9000**	50 – 80

Package consists of: demolition and sorting grab, integrated rotation with sturdy slewing ring, cutting edges and non-return valve

Optional second heavy duty motor for D19H-P HD, D20H-P HD, D24H-P HD

Notes: *optional with 2 motors for rotation **second heavy duty hydraulic motor comes standard ***incl. CW4 (integrated)

Accessories

Type	Description
KM 690	different sized adapters for rigid mounting – for excavators up to 70t
OQ	bolt-on adapter for Oilquick OQ – 5t up to 70t
KSW rigid	bolt-on-adapter for „System L-Lock“ KMS/KHS for rigid mounting – up to 40t

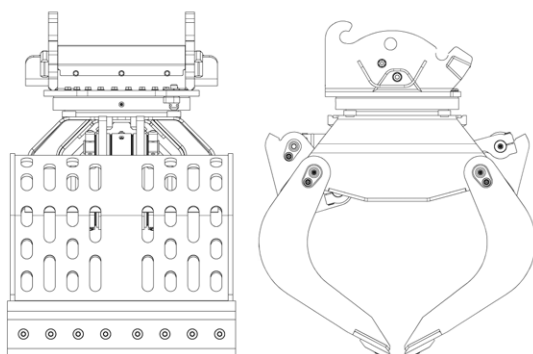
adapters for quick change systems – from other manufacturers or different sizes available on request

Requirements of Excavator

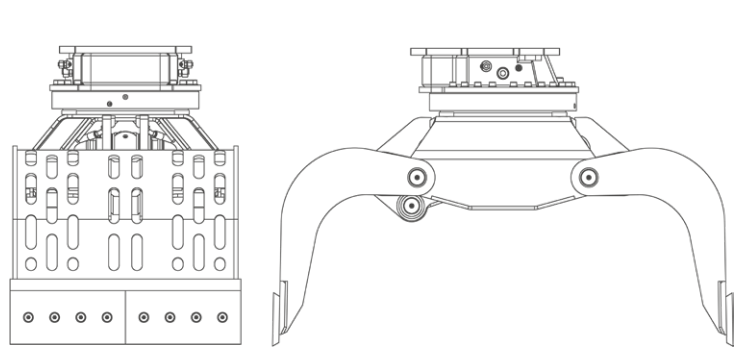
Operating pressure (open/close):	D15 - D70: max. 35 MPa (350 bar)
Recommended oil flow (open/close):	D15 / D16: max. 80 l/min; D19 - D27: max. 100 l/min; D32 - D50: max. 120 l/min; D70: max. 200 l/min
Operating pressure (rotation):	D15 - D70: max. 14 Mpa (140 bar)
Recommended oil flow (rotation):	D15 - D24: max. 40 l/min; D25 - D70: 40 - max. 60 l/min

Technical Drawings

D25H-P-HD



D32H-P-HD



Mounting options for Attachments

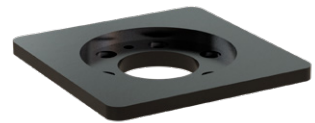
KM 690 – adapter for rigid mount

Type	Operating weight
KM 690 2t	up to 2t
KM 690 8t	up to 8t
KM 690 15t	up to 15t
KM 690 20t	up to 20t
KM 690 27t	up to 27t
KM 690 32t	up to 32t
KM 690 40t	up to 40t



KM 691 – adapter for specific solutions

Type	Operating weight
KM 691 2t	up to 2t
KM 691 8t	up to 8t
KM 691 15t	up to 15t
KM 691 20t	up to 20t
KM 691 27t	up to 27t



KSW rigid – bolt-on adapter for quick coupler system L-Lock

Type	for quick coupler type	Operating weight
KSW01 rigid	KMS01L / KHS01L	up to 2t
KSW03 rigid	KMS03L / KHS03L	up to 6t
KSW08 rigid	KMS08L / KHS08L	up to 12t
KSW10 rigid	KMS10L / KHS10L	up to 19t
KSW21/25 rigid	KMS21/25L / KHS21/25L	up to 40t



S rigid – bolt-on adapter for quick coupler system S-Lock

Type	for quick coupler type	Operating weight
S40 rigid	KMS40S / KHS40S	up to 6t
S45 rigid	KMS45S / KHS45S	up to 11t
S50 rigid	KMS50S / KHS50S	up to 11t
S60 rigid	KMS60S / KHS60S	up to 18t
S70 rigid	KMS70S / KHS70S	up to 30t



Note: adapters for quick change systems for other manufacturers or other sizes on request

Mounting options for Attachments

OQ - bolt-on adapter for system „Oilquick“ incl. hoses



Type	For attachments	Operating weight
OQ40/4 rigid	grabs, shears	1t - 5t
OQ45/4 rigid	grabs, shears	5t - 12t
OQ45-5/4 rigid	grabs, shears	5t - 12t
OQ60/4 rigid	grabs, shears	8t - 15t
OQ60-5/4 rigid	grabs, shears	8t - 15t
OQ65/4 rigid	grabs, shears	14t - 22t
OQ70/4 rigid	grabs, shears	15t - 28t
OQ70/55/4 rigid	grabs, shears	18t - 32t
OQ80/4 rigid	grabs, shears	25t - 43t

SW – bolt-on adapter for system „Liebherr“



Type	Operating weight
SW33 rigid	8t - 18t
SW33 Likufix rigid***	8t - 18t
SW48 rigid	14t - 30t
SW48 Likufix rigid***	14t - 30t
SW66 rigid	28t - 45t
SW66 Likufix rigid***	28t - 45t

***incl. hoses

CW – bolt-on adapter for system „Verachtert“



Type	Operating weight
CW05 rigid	up to 3,5t
CW10 rigid	3,5t - 10,5t
CW20 rigid****	7,5t - 15t
CW30 rigid****	15t - 25t
CW40 rigid****	20t - 30t
CW45 rigid****	25t - 40t

****also available as smaller S-version

Note: adapters for quick change systems for other manufacturers or other sizes on request



KINSHOFER
crane and excavator attachments

CONTACT

KINSHOFER Branches

Hauptsitz Deutschland:

KINSHOFER GmbH
Raiffeisenstrasse 12
83607 Holzkirchen
Tel.: +49 (0) 8021 88 99 0
Email: info@kinshofer.com
www.kinshofer.com

United Kingdom:

KINSHOFER UK Ltd.
4 Milton Industrial Court
Horsfield Way, Bredbury
Stockport, Cheshire, SK6 2TA
Tel.: +44 (0) 161 406 7046
Fax: +44 (0) 161 406 7014
Email: sales-uk@kinshofer.com
www.kinshofer.com

France:

KINSHOFER France S.A.R.L.
8 Bis, rue Gabriel Voisin, CS 40003
F-51688 Reims Cedex 2
Tel.: +33 (0) 3 88 39 55 00
Fax: +33 (0) 3 88 79 06 75
Email: sales-france@kinshofer.com
www.kinshofer.com

Canada:

KINSHOFER North America
5040 Mainway Drive, Unit #11
Burlington, ON L7L 7G5
Tel.: +1 (905) 335-2856
Fax: +1 (905) 335-4529
Toll Free (North America): 1-800-268-9525
Email: sales-northamerica@kinshofer.com
www.kinshofer.com

United States of America:

KINSHOFER USA
6420 Inducon Drive
Suite G
Sanborn, NY, 14132
Tel.: +1 (716) 731-4333
Toll Free (North America): 1-800-268-9525
Email: sales-usa@kinshofer.com
www.kinshofer.com



Part of the
KINSHOFER
Group

kinshofer.com



KINSHOFER is an
ISO 9001 certified Company.
DVS ZERT is a registered trademark
of DVS ZERT® e.V., Düsseldorf.

KINSHOFER Subsidiaries

Nederland:

DEMAREC Demolition and Recycling Equipment B.V.
De Hork 32
NL-5431 NS Cuijk
Tel.: +31 (0) 485 442300
Fax: +31 (0) 485 442120
info@demarec.com
www.demarec.com

Sverige:

RF System AB
Furutorpsgatan 6
SE-288 34 Vinslöv
Tel.: +46 (0) 44 817 07
Fax: +46 (0) 44 859 63
Email: info@rf-system.se
www.rf-system.se

United Kingdom:

Auger Torque Europe Limited
Hazleton
Cheltenham, GL54 4DX
Tel.: +44 (0) 1451 861 652
Fax: +44 (0) 1451 861 660
Email: sales@augertorque.com
www.augertorque.com

Australia:

Auger Torque Australia Pty Ltd.
122 Boundary Road, Rocklea
Queensland 4106
Tel.: +61 (0) 7 3274 2077
Fax: +61 (0) 7 3274 5077
Email: sales@augertorque.com.au
www.augertorque.com.au

Doherty Couplers & Attachments Ltd.

PO Box 701,
Annerley (Brisbane) QLD, 4103
Tel.: +61 1 800 057 021
Email: sales@dohertydirect.net
www.dohertydirect.net

New Zealand:

Doherty Engineered Attachments Ltd.
PO Box 9339, Greerton
Tauranga 3142
Tel.: +64 7 574 3000
Fax: +64 7 574 8030
Email: sales@dohertydirect.net
www.dohertydirect.net

United States of America:

Solesbee's Equipment & Attachments, LLC
2640 Jason Industrial Parkway
Winston, GA 30187
Toll Free (North America): 1-800-419-8090
Email: sales@solesbees.com
www.solesbees.com

中国:

Auger Torque China CO., Ltd.
Baozhan Rd, Tongyi Industry Zone
Dongwu, Yinzhou, Ningbo
China 315114
Tel.: + 86 (0) 574 8848 8181
Fax: + 86 (0) 574 8848 8687
Email: john.hu@attachmenttorque.com
www.augertorque.com

Italia:

Hammer S.r.l.
Via Oleifici dell' Italia Meridionale, lotto G1
IT-70056 Molfetta BA
Tel.: +39 080 337 5317
Email: info@hammer-europe.com
www.hammereurope.com